



## MA Statewide Professional Development System

### NEW Educator and Provider Regional Partnerships

EEC envisions a workforce development system that is accessible to all educators across the state with core functions that are available statewide and interconnected professional development offerings at the statewide, regional, and local levels. The system has multiple access points that contribute unique functions, key partners, linkages and pathways to the system. Through the EPS grant, EEC is supporting pathways that guide educators to degree attainment and increased competency and that guide providers (programs) in attaining and maintaining accreditation and upward movement on QRIS. The EPS grant focuses on **3 core areas of professional development:**

#### ❖ Educator and Provider Planning

***Goal:** To implement professional development pathways for educators and providers in the mixed delivery system regardless of setting, age group, and position level. The development of pathways includes an assessment of each educator's knowledge, skills, and abilities (competencies) and a plan that reflects individual experience, and self-identified goals. Pathways include individual professional development plans (IPDPs) that begin by addressing basic academic needs and achieving a credential or certificate and lead to a college degree. Pathways for providers (programs) include supports to increase program quality through attaining and maintaining accreditation and upward movement in the QRIS system.*

#### ❖ Coaching and Mentoring

***Goal:** To empower educators and providers in making informed educational choices that advance their professional growth by delivering services that include individual career and academic counseling and by providing coaching and mentoring that support the goals of individual educators and providers through varied levels of support.*

#### ❖ Competency Development

***Goal:** To ensure educators are gaining the skills and knowledge necessary to increase individual competency, enhance program quality, and improve outcomes for children. Competency is achieved through professional development that addresses theory to practice, utilizes reflection, adapts to individual educator and provider needs. It aligns EEC Core Competencies with ESE Curriculum Frameworks, and supports the use of environmental rating scales and evidenced-based assessments. Increased competency leads to the attainment of a degree, certificate, or credential for educators and, for providers, accreditation and upward movement on QRIS.*

### Core Goals

- *Educators are supported to increase competency and earn a degree, certificate, or credential in ECE or related field.*
- *Educators have access to the resources and supports (coaching and mentoring) to set and achieve professional and academic goals.*
- *Providers receive supports and resources to achieve and maintain accreditation.*
- *Providers are supported in upward movement on QRIS system.*
- *Educators and Providers are working on specific activities based on IPDP to achieve one of the core goals listed above*

**Contact the EPS Regional Partnership in your area:** To learn more about the professional development opportunities that are available to you such as college or CEU courses and career and academic advising contact:

**Western MA: (Region 1)** Preschool Enrichment Team, Inc. 293 Bridge Street, Suite 322, Springfield, MA 01103  
Vicki Van Zee: 413-736-3900 or [vvanee@preschoolenrichmentteam.org](mailto:vvanee@preschoolenrichmentteam.org)

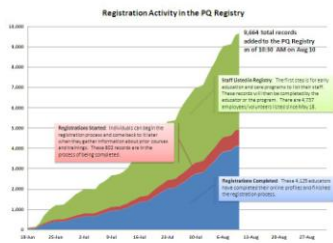
**Central MA: (Region 2)** Family Services Organization of Worcester, 31 Harvard Street, Worcester, MA 01609  
Joanne Gravell: 508-756-4646 or [jgravell@cccscm.org](mailto:jgravell@cccscm.org)

**Northeast MA: (Region 3)** North Shore Community College, 1 Ferncroft Road LE-217, Danvers, MA 01923  
Kathy Gallo: 781-593-6722 X6249 or [kgallo@northshore.edu](mailto:kgallo@northshore.edu)

**Metro West: (Region 4)** Child Care Resource Center, Inc., 130 Bishop Allen Drive, Cambridge, MA 02139  
Jenn Kapusik: 617-547-1063 x214 or [kapuscikj@ccrcinc.org](mailto:kapuscikj@ccrcinc.org)

**Southeast MA: (Region 5)** Community Action Committee of Cape Cod and Islands, Inc, 115 Enterprise Rd, Hyannis, MA 02601  
Beth Gaffney: 508-778-9470 or 1-888-530-2430 or [bethg@cacci.cc](mailto:bethg@cacci.cc)

**Metro Boston: (Region 6)** ABCD, Inc, 178 Tremont Street Boston, MA 02111  
Yvette Rodriguez: 617-348-6281 or [yrodriguez@bostonabcd.org](mailto:yrodriguez@bostonabcd.org)

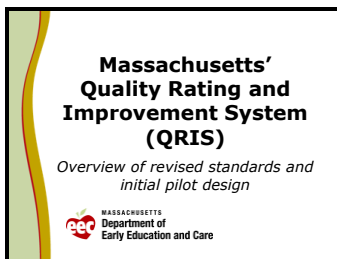
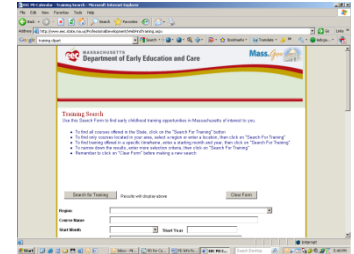


**Professional Qualifications Registry:** Over 10,000 educator records were added within the first 6 weeks, with many more being listed and registering each day. Registration is required for EEC-licensed center-based programs and family child care homes to comply with the regulations and access professional development resources. If you are working in early education or out-of-school time and have not registered yet, you can do so today at:

<https://www.eec.state.ma.us/PQRegistry/>.

**Professional Development Calendar:** Search EEC's online calendar to find professional development opportunities in your area or across the state that meet your needs! The professional development calendar serves as a centralized source of information on courses and training for all educators and licensees in MA. To access the calendar visit:

[www.eec.state.ma.us/ProfessionalDevelopment/WebFindTraining.aspx](http://www.eec.state.ma.us/ProfessionalDevelopment/WebFindTraining.aspx)



**Quality Rating and Improvement System (QRIS):** EEC launched the provisional QRIS standards in March 2010. 850 programs across the state are now engaged in the pilot process. The QRIS pilot will allow EEC to learn more about how the rating process works and to make informed decisions about necessary enhancements prior to full implementation scheduled for January 2011. For more information visit:

<http://www.mass.gov/?pageID=coesubtopic&L=3&L0=Home&L1=Early+Education+and+Care&L2=Quality+Standards&sid=Eeoc>

**EEC Core Competencies:** The 8 core competency areas and subcategories reflect the knowledge, skills, and dispositions necessary for all educators, youth workers, and administrators working in the early education and care and out-of-school time field. Professional development opportunities sponsored by EEC align with core competency areas. For more information visit:

[http://www.eec.state.ma.us/docs1/prof\\_devel/core\\_comp\\_packet.pdf](http://www.eec.state.ma.us/docs1/prof_devel/core_comp_packet.pdf)



**IHE Mapping Project:** The IHE Mapping Project maps the current network of two and four year public and select private Institutions of Higher Education (IHEs) in Massachusetts that offer an Early Childhood Education (ECE) program of study, elementary education program or program in a related field that leads to a certificate, and/or an associate's or a bachelor's degree. The project includes a profile for each school surveyed and a searchable database of ECE degree program required coursework. For more information visit:

<http://www.mass.gov/?pageID=coesubtopic&L=4&L0=Home&L1=Early+Education+and+Care&L2=Workforce+and+Professional+Development&L3=Training+Resources+%26+Opportunities&sid=Eeoc>

